

# CUTE AS A BUG

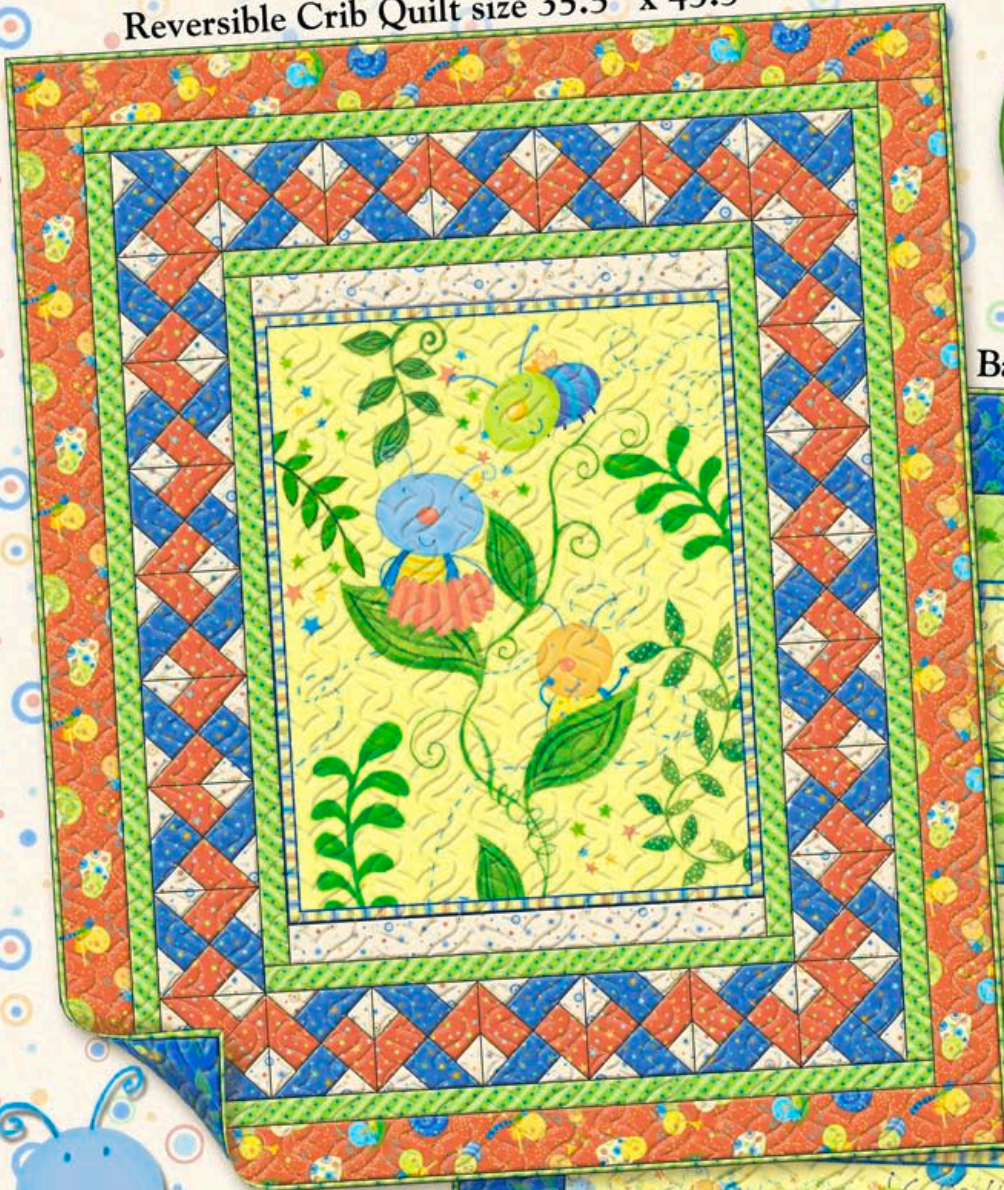
Q1657

BY VIV EISNER



Reversible Crib Quilt size 35.5" x 43.5"

Free  
Pattern  
\* offered in \*  
independent quilt  
shops to comple-  
ment this fabric  
collection



Back Side of Crib Quilt



Wilmington Prints: A World of Possibilities

# CUTE AS A BUG

Q1657

BY VIV EISNER



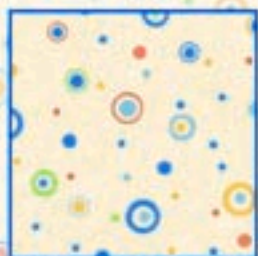
Fabric A: 87601-754  
(1 Panel) 2/3 yard



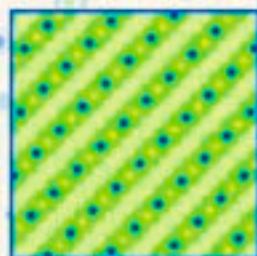
Fabric B: 87602-574  
1 yard



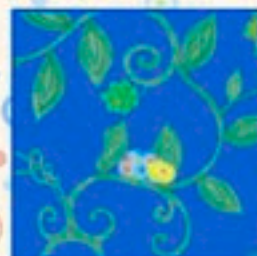
Fabric C:  
87603-375  
5/8 yard



Fabric D:  
87604-148  
5/8 yard



Fabric E:  
87605-745  
1 yard  
(Incl. Binding)



Fabric F:  
87606-478  
3/4 yard



Fabric G:  
87607-348  
7/8 yard



Fabric H:  
87607-448  
7/8 yard



Q555-121-555  
"Cute As A Bug"  
Project Sheet - Pack of 12

Bolts needed to cut project:

Fabric	12 Kits	18 Kits	24 Kits
A 87601-754	1 Bolt	1 Bolt	2 Bolts
B 87602-574	1 Bolt	2 Bolts	2 Bolts
C 87603-375	1 Bolt	1 Bolt	2 Bolts
D 87604-148	1 Bolt	1 Bolt	2 Bolts
E 87605-745	1 Bolt	2 Bolts	2 Bolts
F 87606-478	1 Bolt	1 Bolt	2 Bolts
G 87607-348	1 Bolt	2 Bolts	2 Bolts
H 87607-448	1 Bolt	2 Bolts	2 Bolts

Kit requirements based on  
a minimum of 15 yards per bolt

WILMINGTON  
*Prints*

Wilmington Prints: A World of Possibilities