

SALT & PEPPER

Q1007
Q1402
Q1839



FREE
PATTERN
OFFERED
IN INDEPENDENT
QUILT SHOPS TO
COMPLEMENT THIS
FABRIC COLLECTION.

Finished Quilt Size: 59" x 59"



SALT & PEPPER

Fabric Chart & Yardage Needed:

Q1007
Q1402
Q1839



Fabric A
Q1007-88046-119
1/3 yard



Fabric B
Q1007-88047-199
1/3 yard



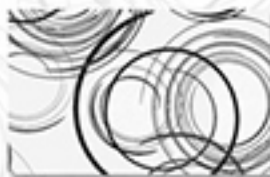
Fabric C
Q1007-88047-991
1/3 yard



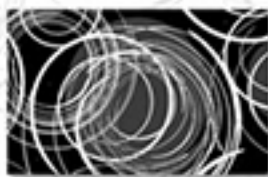
Fabric D
Q1007-88048-119
1/3 yard



Fabric E
Q1007-88048-199
1/2 yard



Fabric F
Q1402-26062-119
1/3 yard



Fabric G
Q1402-26062-991
1/2 yard



Fabric H
Q1839-86026-199
1/2 yard



Fabric I
Q1839-86027-991
5/8 yard (*piecing*)
4 yards (*backing*)



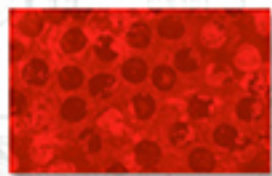
Fabric J
Q1839-86028-199
5/8 yard



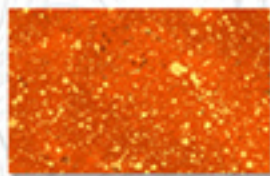
Fabric K
Q1839-86028-991
5/8 yard

*Thumbnails shown at
50% of actual size*

"COMPLEMENTS"



Fabric L
Q1875-31072-333
1 yard



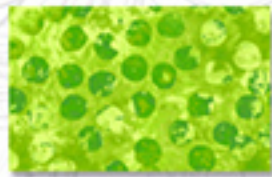
Fabric M-*New*
Q1080-31588-858
1/3 yard



Fabric N
Q1875-31072-888
1/3 yard



Fabric O
Q1887-38717-555
1/4 yard



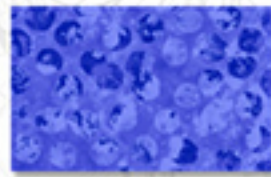
Fabric P
Q1875-31072-757
1/4 yard



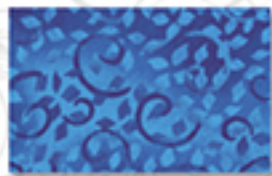
Fabric Q-*New*
Q1402-26035-774
1/4 yard



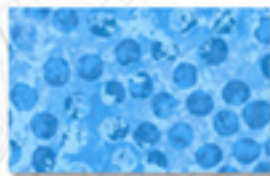
Fabric R
Q1887-38717-666
1/3 yard



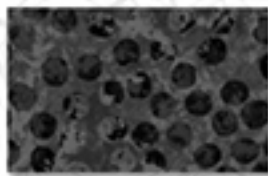
Fabric S-*New*
Q1875-31072-644
1/3 yard



Fabric T
Q1402-26035-440
1/4 yard



Fabric U
Q1875-31072-444
1/4 yard



Fabric V
Q1875-31072-999
3/4 yard

Q550-89-550
"Salt & Pepper"
Project Sheet - Pack of 12

